

VIGR
GWALIOR

IAF
06 DEC 18

GWALIOR, INDIA
CAT II ILS RWY 24L

GWALIOR Approach 122.7 VC, UC			GWALIOR Tower 122.7 VC		ATIS 112.8	2700'	
VOR GWA 112.8	ILS IGWL 110.3	FINAL Apch Crs 241°	GS D 4.0 IGWL 1880'	DA (H) As per table	Apt Elev 626'		MSA GWA VOR
MISSED APCH: Climb STRAIGHT AHEAD to 2700', then turn LEFT to join VOR hold or as directed by ATC.							
Alt Set: hPa		Rwy Elev: 21 hPa	Trans level: By ATC		Trans alt: 4000'		

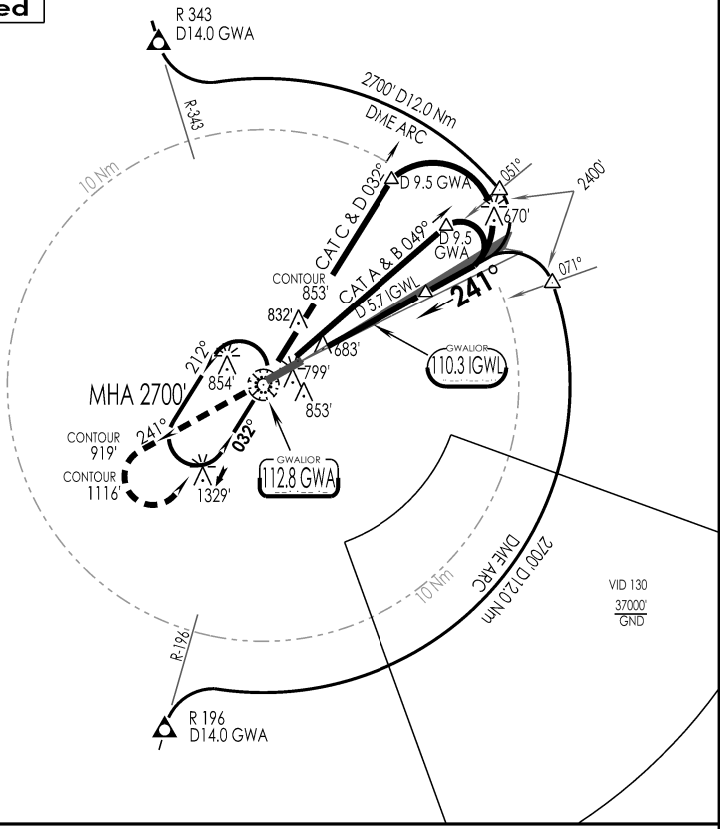
DME Required

1 Inch = 7.5 NM

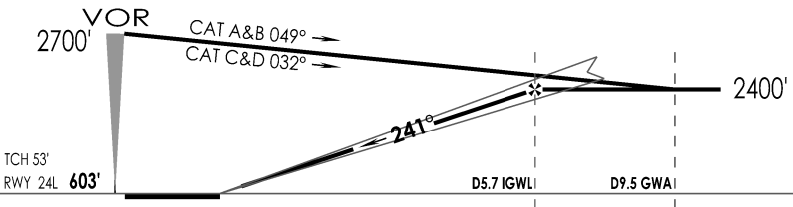
7.5 NM

0

7.5 NM



SURVEY OF INDIA REPORT - 2014/15



STRAIGHT - IN LANDING Rwy 24L		CIRCLE - TO - LAND	
DA(H)	CAT II ILS	RA	
AB: 723' (120')	C: 735' (132')	AB: 120'	C: 132'
	D: 749' (146')	D: 146'	
FULL		Max Kts	MDA (H)
A	RVR 300m	100	1150' (531')
B		135	2800m
C	RVR 400m	180	1250' (631')
D	RVR 450m	205	1730' (1111')
VIS		5000m	

LIGHTING : CAT II(24L),SALS(06R),STD OWL LIGHTING(24R/06L),PAPI(24L/06R)3.0°,PAPI(24R/06L)2.5°

CHANGES : Apt Elevation IPDC, DTE OF OPS (T & H)